



JANUARY 2021

DAILY DROP-OFF & PICK-UP HOURS

Monday – Friday

7:00am – 9:30am

12:30pm – 2:00pm

4:30pm – 7:00pm

Saturday

8:00am – 10:00am

3:00pm – 4:00pm

*Boarders may be picked up as late as 6:00pm

Sunday

(Boarding drop off & pick up only)

9:00am – 11:00am

4:00pm – 6:00pm

Upcoming Events

Jan 1st – **CLOSED**

Jan 2nd – **Carolina Value Pet Care**
(9:30am-4:30pm)

Jan 30th – **Carolina Value Pet Care**
(9:30am-4:30pm)

**NO Daycare or Boarding Drop-Offs or
Pick-Ups on the following Howl-idays:**
New Year's Day, July 4th, Thanksgiving,
and Christmas.

We operate normal business hours on all other
howl-idays, except Christmas Eve.

NORMAL HOURS ALL MONTH, AFTER JANUARY 1ST

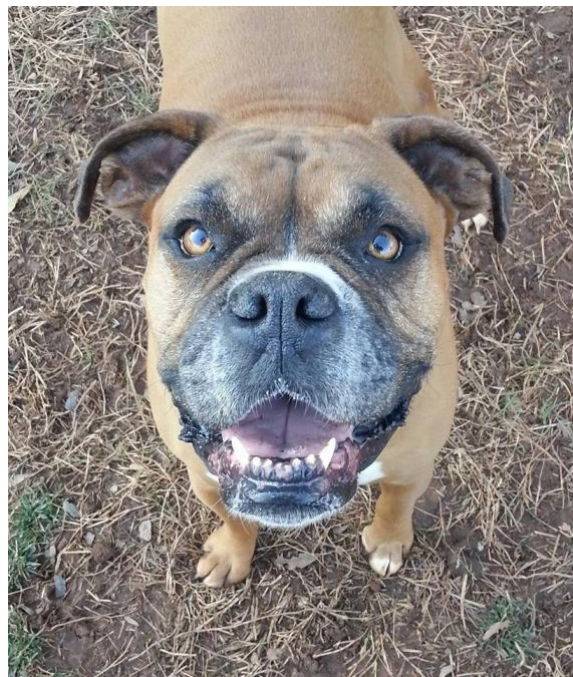
Due to the safety of our staff and all Campers, pick-ups will
not be permitted during any times, other than those above.



Forever in our hearts...

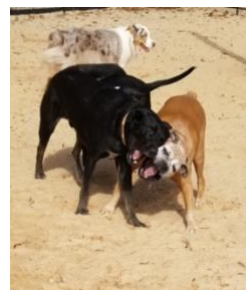
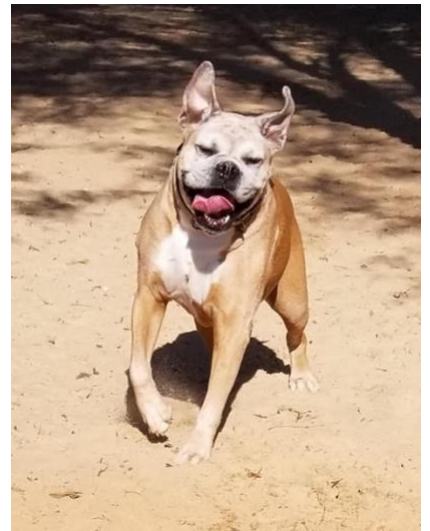
Forever our best Happy Hound'er...

Forever the one and only, Rosco Cooper.



Rest Easy, Rosco

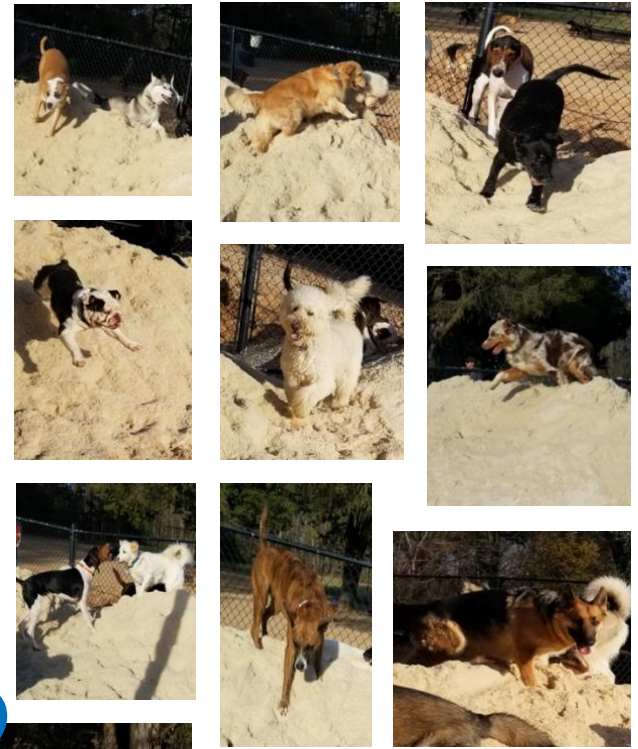
06.03.09-12.20.20



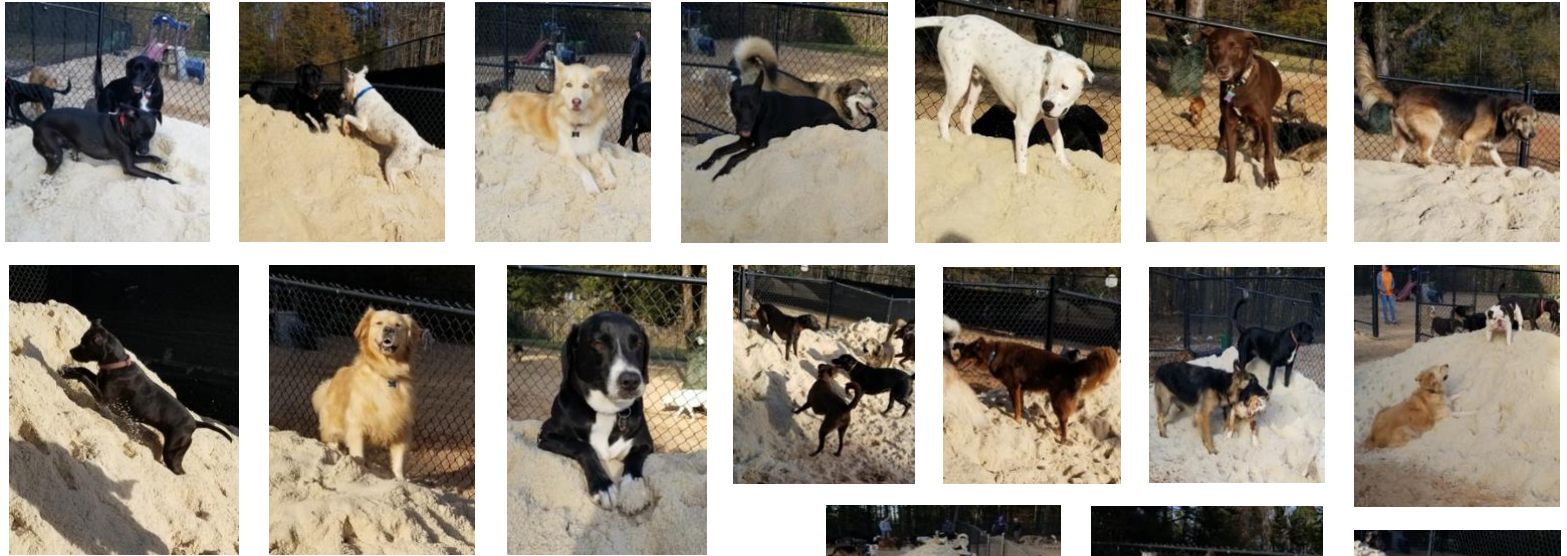
Thank you, to everyone who shared a picture of their furbaby with Rosco.



2021



New Sand,

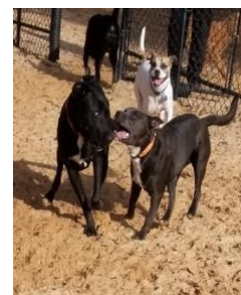
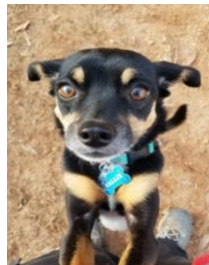


Who Dis?





Yappy New Year!



FIND OUR "PARENT PAGE" GROUP
ON FACEBOOK FOR A WHOLE NEW
SIDE TO CAMP HAPPY HOUND!

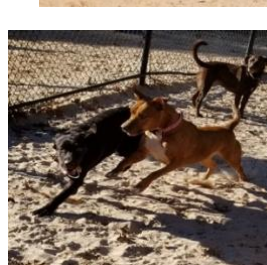
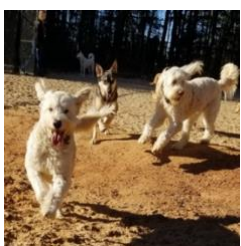
<https://www.facebook.com/groups/CampHappyHoundParents/>

HAPPY HOUND'ERS ONLY!

PARENT SHARES

TRIVIA GIVEAWAYS

HAPPY HOUND EXCLUSIVES



JANUARY'S CAMPER OF THE MONTH:

Star Collins

Star is her own dog, who wants to do her doggy thing on her own without you watching! While she plays ruff and tough with her furends, she'll almost never let you catch it on camera! Her life motto must be, "What happens at Camp, STAYS at Camp!" Star has been a multi-day a week player for quite some time now, she knows the ins and outs of Camp very well and uses it to her advantage when it comes to play and hangout spots! Congrats Star, on Camp of the Month. January is for you!



Next Clinic at CHH:
January 2nd & 30th



mobile vet & vaccine clinic

- *our team sees all dogs and cats
- *no appointment required
- *vaccines
- *microchipping
- *heartworm prevention
- *flea/tick meds
- *and more!

www.carolinavaluepetcare.com

***Please Note:** While our front doors are open for CVPC, during their Clinic hours on Saturday, we only accept and dismiss Campers 8:00am-10:00am and 3:00pm-4:00pm (Boarders until 6:00pm). Thank you.

JANUARY

www.dox.design.com

Walk Your Pet Month
National Train Your Dog Month

'Pet-Related' Holidays

January 1st
New Year's Day



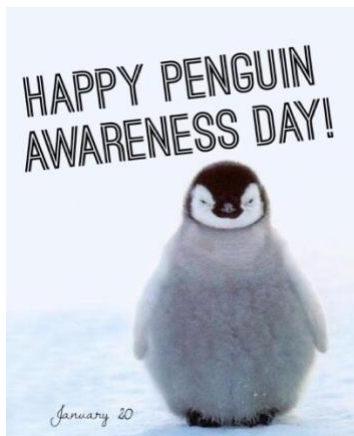
January 5th
National Bird Day



January 14th
National Dress Up Your Pet Day
(If they're "ok" with it!)



January 20th
Penguin Awareness Day



January 21st
Squirrel Appreciation Day



January 22nd
National Answer Your Cat's Questions Day



January 24th
Change a Pet's Life Day



Homemade Dog Treats

PB & Ginger Snaps

INGREDIENTS

- 2 Cups Almond Flour
- 1/2 Cup Coconut Flour
- 1/2 – 3/4 Cup Natural Peanut Butter
- 3 Tablespoons Ground Ginger
- 1 Tablespoon Cinnamon
- 1/4 Cup Water

COOKING INSTRUCTIONS

Preheat oven to 165C.

1. Mix all ingredients together in a large bowl and form a ball with the dough.
2. Roll the dough out until flat and use a cookie cutter to cut out the individual treats.
3. Place your treats onto your baking tray and bake for 25 minutes.
4. Turn oven off after the 25 minutes are done and leave the treats in the oven for 45 more minutes, or until crisp.





Tell me about... Canine Influenza Virus aka “Kennel Cough”

By Dr. Bob Parrish, 2018



There are 2 active forms of the Canine Flu virus: **H3N2** and **H3N8**.

- The H3N8 virus was discovered nearly 15 years ago in Florida. Dogs infected with this virus can shed/spread the virus for 5 days.
- The H3N2 virus arrived in the U.S. in 2015 and dogs infected with this virus can shed/spread it for more than 3 weeks!

WHO IS AT RISK?

While there is much information available about Canine Flu (www.DogFlu.com is one good resource), perhaps the most crucial information is knowing that **the dogs most at risk of getting Canine Flu (CIV) are those dogs that are “social”**. Dogs that are boarded or go to doggy daycare, dogs interacting with one another at dog parks, and dogs that are groomed are most likely to be exposed. It's also important to know that **virtually every dog that is exposed to the viruses will become infected, even if vaccinated. Fortunately, there is a Canine Flu vaccine** that we can give that **protects against both the H3N2 and H3N8 viruses** (we call it a “bivalent” vaccine). The vaccine is proven to significantly reduce the severity of the flu symptoms and the length of time the pet is sick. Many boarding facilities/kennels are now **requiring** that their customers' dogs be vaccinated against the flu, which protects both your pet and other pets at these facilities.

If your dog has not been vaccinated against these 2 strains of flu, we give an initial vaccine, then a booster must be given 2 to 4 weeks later. The booster is then good for 1 year.

If your dog has been vaccinated against *only* the H3N8 (we had a vaccine for only this virus until late 2016, when the bivalent vaccine came out), it would also need to receive 2 vaccines given 2 to 4 weeks apart, then a booster once a year to ensure complete protection.

KEEP IN MIND...

While direct contact with a dog carrying one of the viruses is the most potent means of contamination, **it can also be spread through the air**. An infected dog that coughs or sneezes can spread the virus up to 20 feet away! Contaminated objects such as food bowls and water bowls and toys can be a source of infection as well. Even people can transmit the viruses from an infected dog to an unprotected dog.

SYMPTOMS

The common symptoms of Canine Flu include coughing, a thick discharge from the nose or eyes, fever, loss of appetite, and sluggishness/lethargy. Severe cases can develop into life-threatening pneumonia. But understand that there are several different ‘bugs’ that can cause respiratory infections in dogs and Canine Flu is just one of them. The fact that Canine Flu is so highly contagious for several days, and the fact that it can be fatal, makes it a very serious concern for veterinarians AND for pet owners, boarding facilities, groomers, etc.

CAN CATS GET CANINE FLU?

It is very uncommon for cats to get the Canine Flu, but it is possible for them to get the H3N2 virus. However, the vaccine is only labelled to be given to dogs.

CAN PEOPLE GET CANINE FLU?

There has been no evidence of people getting the Canine Flu from dogs or cats.

If you have concerns that your dog is at risk, **Carolina Value Pet Care** definitely encourage getting the Flu Vaccine.

Monthly Themed Activities

Animal Fun Page

Learn about the fascinating world of baboons!

True or False

1. Baboons are vegetarians.
2. Baboons are primates.
3. Baboons climb by using their tails.

ANSWERS

1. F They are omnivores.
2. T 3. F Baboons do not have prehensile tails, they climb using only their arms and legs.

Baboon Word Search

Words might be horizontal, vertical or backward

EOAIOOEBAARABIARAMV
ONROAOIAAMPVTBCIVCA
NFRNPOVNIOAVPRIMATE
BNANNAVASRPORORAACR
SORBOVRARNNAVOFAPOO
CROORRVTFARNOCATPNV
ARACRBSEONBIAARROAI
AVOACPOMBOACABABOON
RTNIERRAEARRANORREM
NIANSAAOBVRRPNVTMO

Savanna
Primate
Baboon
Africa
Arabia
Omnivore
Troop

OWLEHREAPPEPPPPH
W300HPPPPPPH33HLY
NOD00000000000000
200000000000000000
000000000000000000
000000000000000000
000000000000000000
000000000000000000
000000000000000000
000000000000000000

JUST JOKING

Q: What do you call a flying primate?

A: A hot air baboon!

Baboon Facts

Baboons live in large troops, made of dozens or even hundreds of baboons.

Baboons use more than ten different vocalizations to communicate with others in their troop.

Color the Baboon

Baboons can be shades of brown, black or blonde.



CAMP HAPPY HOUND



Premium Doggy Daycare & Boarding

995 Warren C. Coleman Blvd., Concord, NC 28025

704-784-CAMP

info@camphappyhound.com

Daycare Times & Prices

MONDAY – FRIDAY

Full Day: \$24.00 (+\$14.00 per additional dog)

Drop off 7:00am-9:30am, Pick up 4:30pm-7:00pm

Half Day: \$18.00 (+\$10.00 per additional dog)

Drop off 7:00am-9:30am, Pick up 12:30pm-2:00pm

or Drop off 12:30pm-2:00pm, Pick up 4:30pm-7:00pm

SATURDAY

Full Day: \$20.00 (+\$14.00 per additional dog)

Drop off 8:00am-10:00am, Pick up 3:00pm-4:00pm

Daycare Packages

Full Day Packages

10 days: \$210 + Additional Dog: \$120

20 days: \$380 + Additional Dog: \$200

Half Day Packages

10 Days: \$170 + Additional Dog: \$90

20 Days: \$320 + Additional Dog: \$160

Boarding Prices

\$44 per night (7th night FREE!)

+\$26 per additional dog



Over 2 acres of fenced-in outside play areas

Wall-to-wall rubber floors in 3 large indoor runs

Climate controlled, solid-walled kennels



FIND US ON FACEBOOK!